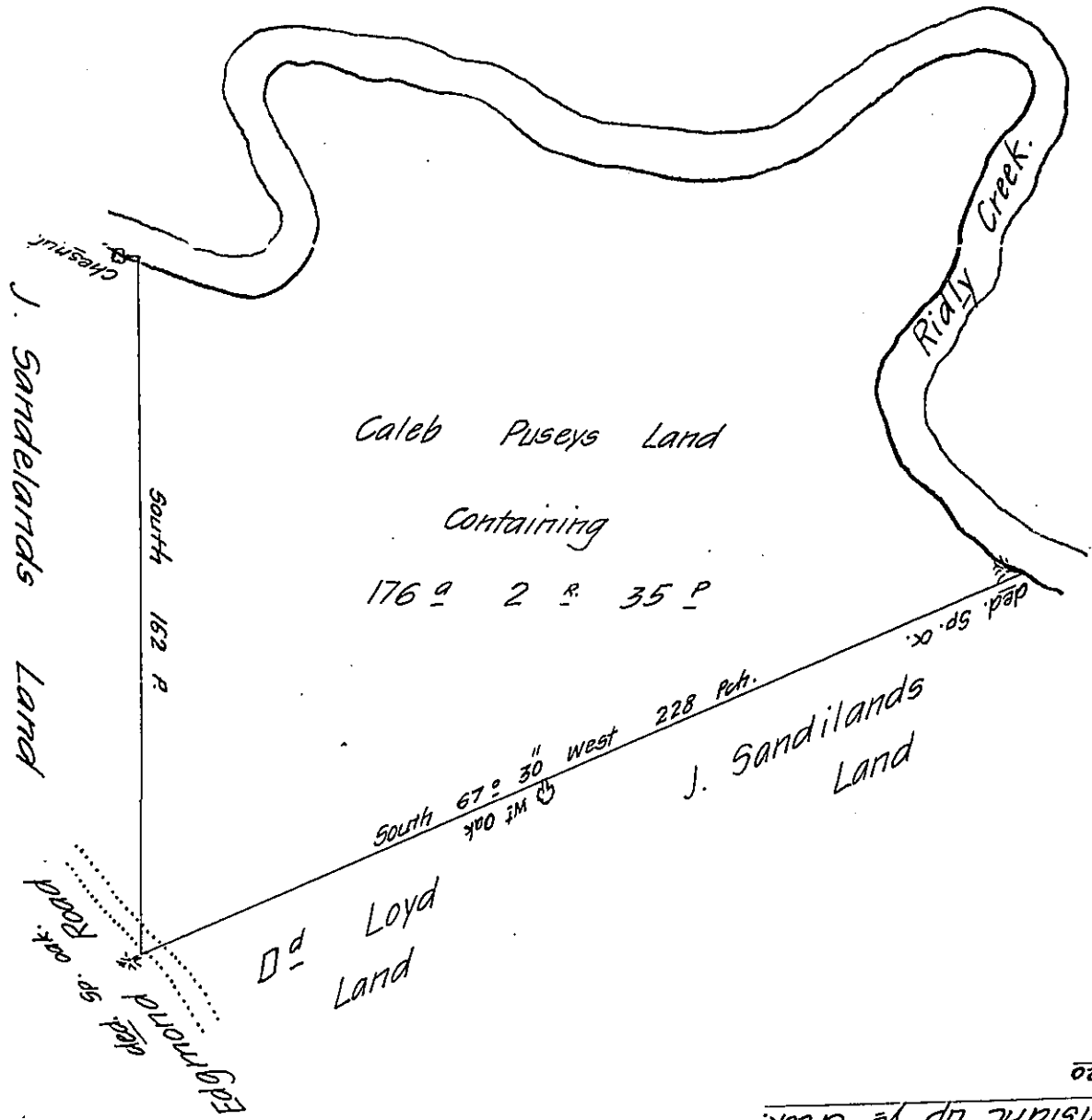


Cours- Distanc- up ye
 N 53 W 18 Creek
 N 25 W 39
 N 33 E 15
 N 31 E 19
 N 6 W 22
 N 50 E 22
 N 76 W 8
 S 81 W 19
 S 70 W 14
 S 36 W 8
 S 53 W 14
 S 74 W 11
 West 34
 N 70 W 18
 N 64 W 22
 N 78 W 43
 S 12 W 17
 S 27 E 12
 S 12 E 12
 S 13 W 8
 S 35 W 10
 S 85 W 16
 N 72 W 20
 To ye Chestnut.



Distance up ye Creek

By Virtue of a Warrant to me directed dated ye 20th m 1703
 I have Resur^d for Caleb Pusey a tract of land in ye Township of Chestr
 according to this Draft Containing 176.9 2 R. 35 P. the 5th 4^m 1703

Henry Hollingsworth

Su^rv^r.

(Return in D-36-112)

IN TESTIMONY that the above is a copy of the original remaining on file in
 the Department of Internal Affairs of Pennsylvania, made
 conformably to an Act of Assembly approved the 16th day of
 February, 1833, I have hereunto set my Hand and caused
 the Seal of said Department to be affixed at Harrisburg,
 this eighteenth day of March 1909

Henry Howell
 Secretary of Internal Affairs.